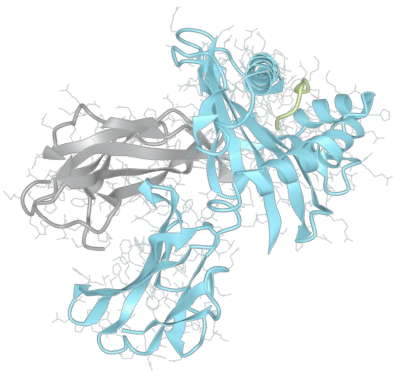


Product datasheet

sHLA-B*41:01bio

B*4101, B4101, B*41, B41, B41



Serological Name	B41
Peptide Load	Endogenous
Modification	Unmodified
Conjugation	Biotin
SKU	B4101bio

Product Description

Allele Name	B*41:01 B2m
HLA Class	HLA Class I
HLA Gene Locus	HLA-B
Alternative Allele Name A Chain	B*4101, B4101, B*41, B41, B41
Alternative Allele Name B Chain	-
Description	Recombinant, truncated Class I soluble Human Leukocyte Antigen (sHLA), naturally folded and glycosylated, loaded with endogenous peptides.
Serological Name	B41
Serological Split	-
Bw4/Bw6 Assignment	Bw6
Bw4/Bw6 Sequence	SLRNLRG
Allele Frequency [World Population]	
A chain	1.3%
B chain	-

Associated products

[B4101](#)
[B4101pe](#)

Product Specification

Product name	HLA-B*41:01bio
HLA Species	Human
Host Cell Line Species	Human
Clone Designation	B4C10
Tail Specification	VLDL
Peptide Load	Endogenous
Modification	Unmodified
Conjugation	Biotin
Complexity	Monomer
Protein Format	Recombinant, truncated, soluble, non-modified, biotinylated, endogenously loaded
Storage Temperature	4 °C (This product should be stored undiluted)
Form	Liquid
Concentration	300.0 µg/µl
Formulation	PBS/0.02% Sodium Azide
pH	7.4
Purification Method	Affinity Chromatography
Grade	Research Use Only [RUO]
Authentication Verification	Sequence Based Typing

Protein Sequences

Alpha Chain Sequence	GSHSMRYFHT AMSRPGRGEP RFITVGYVDD TLFVRFSDSA TSPRKEPRAP WIEQEGPEYW DRETQISKTN TQTYRESLRN LRGYYNQSEA GSHTWQRMYG CDVGPDRLL RGHNQYAYDG KDYIALNEDL RSWTAADTAA QITQRKWEAA RVAEQDRAYL EGTCVEWLRRL YLENGKDTLE RADPPKTHVT HHPISDHEAT LRCWALGFYP AEITLTWQRD GEDQTQDTEL VETRPAGDRD FQKWAAVVVP SGEEQRYTCH VQHEGLPKPL TLRVSVSTDD DLA
Beta Chain Sequence	IQRTPKIQVY SRHPAENGKS NFLNCYVSGF HPSDIEVDLL KNGERIEKVE HSDLSFSKDW SFYLLYYTEF TPTEKDEYAC RVNHVTLSPQ KIVKWRDRM

Related Products

[A0201bio](#)
[A0301bio](#)
[A2402bio](#)
[B0702bio](#)

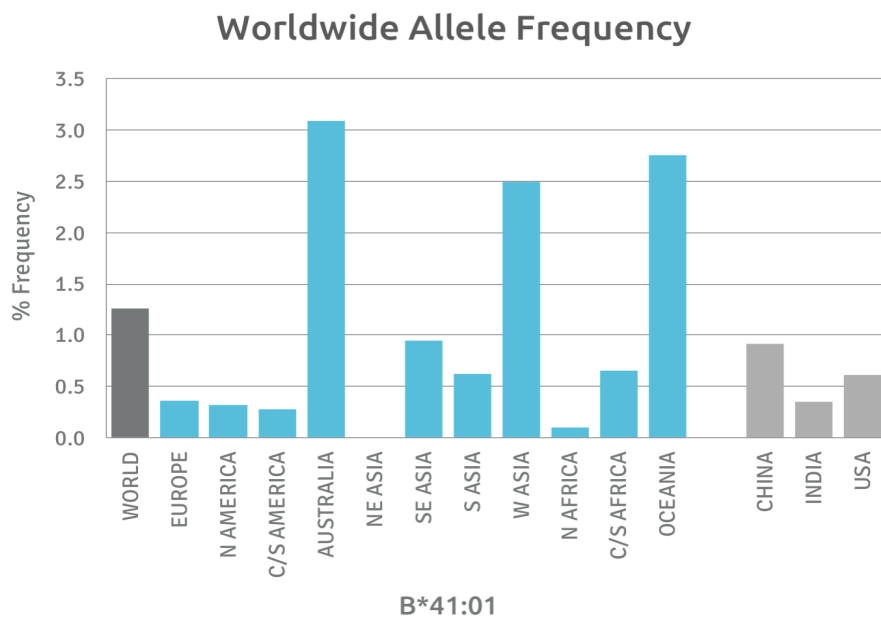
Applications

HLA Sandwich ELISAs
HLA Direct ELISAs
HLA-Sera Antibody Assays
HLA Controls in ELISA Assays
HLA Assay Standards
HLA Blocking Assays
HLA Neutralizing Assays
HLA Competition Assays
HLA Bead Assays
HLA Immunization Procedures

Recommended Antibodies

W6/32
Anti-B2m

Allele Frequency



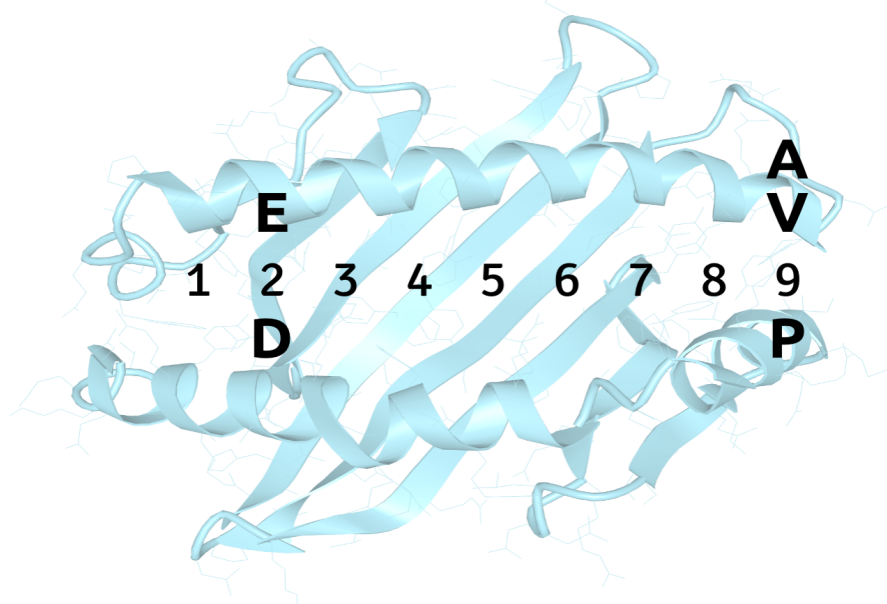
Please note:
ALL PRODUCTS ARE FOR RESEARCH USE ONLY. NOT FOR COMMERCIAL USE IN DIAGNOSTIC PROCEDURES.
For more information, please visit our Policies section on our website. For licensing inquiries, please contact

licensing@hlaprotein.com

 HLA Protein
PURE PROTEIN, LLC

Motif

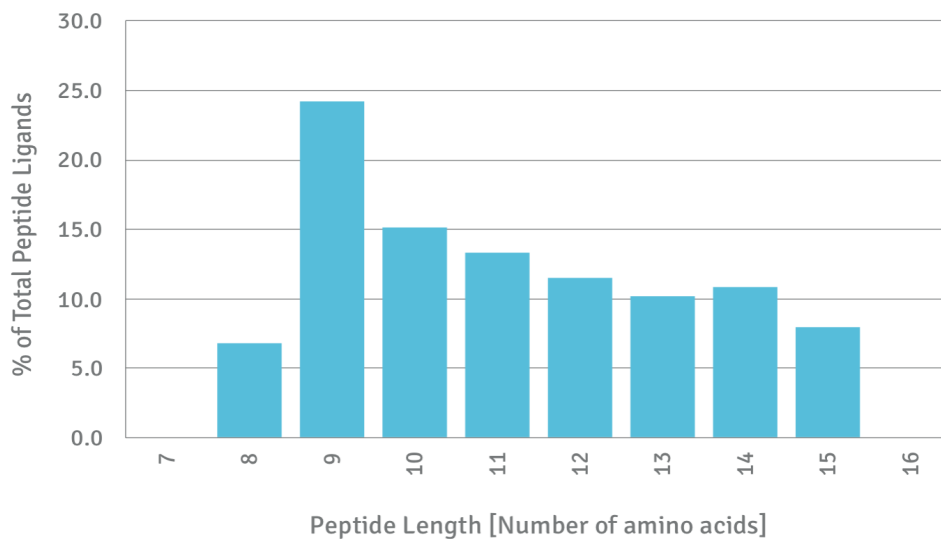
B*41:01 BINDING MOTIF



Length Distribution

HLA Length Distribution

B*41:01



Please note:

ALL PRODUCTS ARE FOR RESEARCH USE ONLY. NOT FOR COMMERCIAL USE IN DIAGNOSTIC PROCEDURES.

For more information, please visit our Policies section on our website. For licensing inquiries, please contact

licensing@hlaprotein.com

Eplet Assignments

B*41:01

Eplet	Polymorphic Residues	Antibody Reactivity
9H	9H	
12M	12M	
24T	24T	
32L	32L	
41T	41T	Yes
45KE	45K46E	Yes
66I	66I	
66IS	66I67S	
69TNT	69T70N71T	Yes
71TTS	71T73T77S	Yes
74Y	74Y	
76ES	76E77S	
76ESN	76E77S80N	Yes
77S	77S	
77SRN	77S79R80N	
80N	80N	Yes
95W	95W	
97R	97R	
99Y	99Y	
113H	113H	
113HN	113H114N	
116Y	116Y	
151ARV	150A151R152V	
152V	152V	
156DA	156D158A	Yes
163T	163T	
177DT	177D178T	
180E	180E	Yes
193PI	193P194I	